



bert leveille

**PRESS
KIT**



ABOUT BERT LEVEILLE

bert leveille never knew that her passion for finding images in clouds; that her love of the smell of greasepaint, and stage environments at Elmhurst College would lead to a life-long journey into art and art installations. While earning her BA, she discovered that she was not meant to be an actress, but an artist.

As a contemporary artist, leveille has created several art installations exploring consciousness. Among collaborations with musicians and performers, Shawn Coyle's dancers played with her 3-D creatures and danced thru her 15-foot art tunnel. Large-scale paintings completed the stage's transformation into this alternate world and provided the inspiration for Coyle's choreographed dance, "Tunnel". leveille's installations include: "in to the ellipse" with music by cellmod in a small vault; "Connecting" — 10ft high two-sided canvases hung from the ceiling; "Exploring Relationships" in collaboration with Angela Swan on Sept 11, 2015 (which evolved into a moving tribute to 911); "the END is the beginning" transformed the gallery with video and changing colored back-lit black and white figurative panels; "Listen to colour" — 10 ft high paintings, video and ocean sound giving one the experience of being on the deck of a colour cruise ship. "Nano Waves" at Wabi-Sabi Gallery in Idaho and Art Prize in Michigan was included in "Streaming Reflections", first presented at Woodstock's Old Courthouse Arts Center. And now these large silver metallic and acrylic paintings of gestural life-size figures lit with changing colored LED lighting will be at TAC - The Art Center Highland Park.

leveille uses her Starline, Harvard studio as an incubation, exhibition, installation, experimentation studio that she opens to the public during most Starline 4th Fridays. As an exhibiting member of E-artgroup, leveille plays an active role in exhibition development. leveille is a Chicago Women's Caucus for Art board member.



ARTIST STATEMENT: "streaming reflections"

I desire to give one a space for reflection and connection – a stage where one can enter a stream of consciousness reflecting an expanding reality, both internally and externally.

As I paint, often to music and/or sounds of nature, I attempt to explore consciousness using myself and my world as a conduit — revealing, intertwining, connecting and exploring a more universal world.

Beginning with metallic silver paint on canvas, I continue to layer metallic paint before and while I add acrylic paint. I see the life-size, somewhat gestural, figurative beings (human-like although not necessarily human) as mindful — with the same challenges, emotions, desires, pain, uncertainty, disappointments, surprise... I see them more like us than not, you more like me than not; and my reality more connected to the greater universe than not. LED changing colored lighting washes over the canvases creating different moods while hiding and highlighting different elements. I am exploring a fine line of one being on stage looking out; becoming part of the stage; and/or viewing the stage.



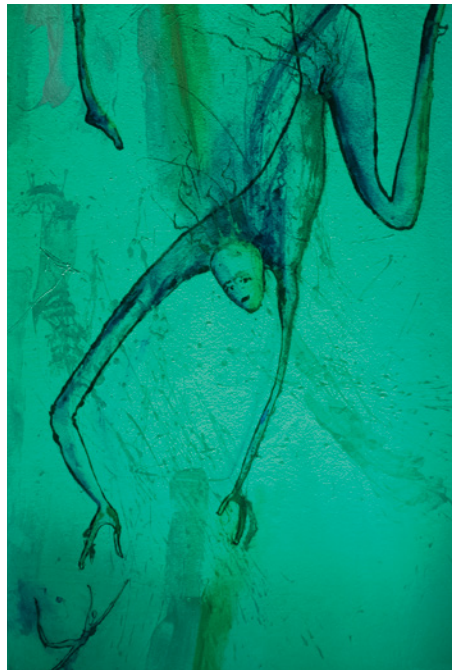
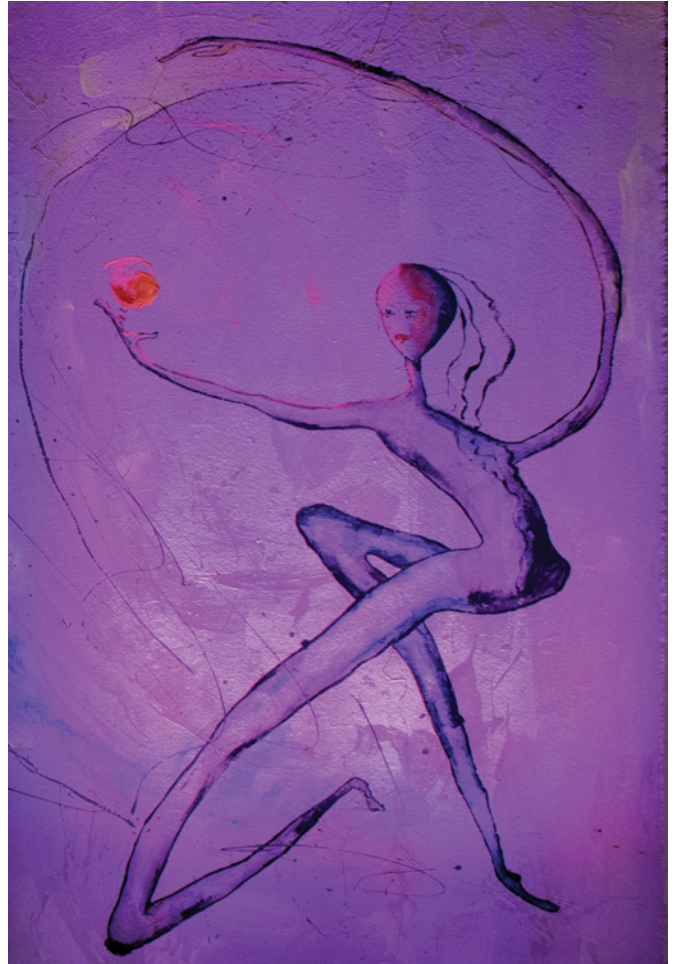
"Nano Waves 1, 2, 3 & 4," metallic and acrylic paint on unstretched canvas



"Nano Waves" detail



"Nano waves" detail installation view with LED changing colored lighting



"Nano Waves" details, installation view with LED changing colored lighting



"Moon Dance", 10' x 12', metallic and acrylic paint on unstretched canvas, installation view with LED changing colored lighting, detail



"Cross-Over", 10' x 22' - metallic and acrylic paint on unstretched canvas, details



bert leveille PRESS

Like Alvin Schwartz sketches bathed in cherry wine red and punch drunk orange, the paintings appear on queen-size canvas and stretch along every wall in the college's newly renovated art space. The more entrancing illustrations play respectfully into what Leveille calls her alternate universe and consciousness, featuring more gothic creations draped with threaded appendages and thinner shadows. "Nebular Breach" and "Future," both acrylics on canvas, are prime representations of Leveille's calendar style; it's one she expresses as a challenged essence of reality, while up close the drawings speak proverbial volumes of imagination revolting from repression.

— Will Petty, Editor in chief, Leader - Cult(ure) Issue: 9/14/04

Viewing the latest exhibit by artist Bert Leveille is a far cry from simply walking between paintings hung on the wall. The experience is more like taking a stroll through Leveille's subconscious ...

— Mary Piskorski, Daily Herald, NOV 1992

While novelists frequently say their characters take on a life of their own, it is far more unusual to hear a painter speak in those terms. But that is precisely how...Bert Leveille regards her work. ...

— Hugh Hart, Chicago Tribune, November 26, 1992



To read more and read what exhibition attendees have to say:
<http://www.bertleveille.com/blwritings.html>

bert leveille • <http://www.bertleveille.com> • bert@leveille.net • 708.309.3333

top photo by David Scharringhausen



BERT LEVEILLE CV

Mailing address: P.O. Box 1123, Woodstock, IL 60098; Studio: 204F, Starline Studios, Harvard, IL
Phone: 708-309-3333 • Website: www.bertleveille.com • Email: bert@leveille.net

SOLO EXHIBITS and INSTALLATIONS

- 2019** The Art Center Highland Park, Highland Park, IL — “STREAMING REFLECTIONS”
- 2018** Old Courthouse Arts Center, Woodstock, IL — E*, “streaming rElections”
- 2018** Wabi Sabi Gallery, Idaho — “NANO WAVES”
- 2017** Old Courthouse Arts Center, Woodstock, IL — “LISTEN TO COLOUR - Colour Voyage” installation
- 2017** Harris Building, Michigan — Art Prize, “IMAGINE”
- 2016** Lake Geneva Art Museum, Lake Geneva, WI — storefront installation
- 2015** Old Courthouse Arts Center, Woodstock, IL — “the END is the beginning”
- 2015** Starline Gallery, Harvard, IL — “CONNECTING”
- 2015** Sheriffs House Pop-up, Woodstock IL — July, “CONNECTING” – August, “REVISITING THE MILLENNIUM”
- 2014** Old Court House Arts Center, Woodstock IL — “IN TO THE ELLIPSE”
- 2010** Schaumburg Prairie Center For the Arts, Schaumburg, IL — “EXPERIENTAL”
- 2004** Accelerator Art Space Gallery, Elmhurst College, Elmhurst, IL — “BRIDGING THE MILLENNIUM”
- 2004** Raue Centre for the Arts, Crystal Lake, IL
- 2004** Algonquin Old Town Hall, and Books and Beans Coffee house, Algonquin, IL
- 1995** Bubbotto, Elgin, IL
- 1994** Campbell House, Geneva, IL
- 1992** Schaumburg Prairie Center For the Arts, Schaumburg, IL — “TOTALLY TUBULAR”
- 1992** Chopin At The Gallery Theater, Around the Coyote (ATC), Chicago, IL
- 1992** Elgin Art Expo - “America In Flux”, Elgin, IL
- 1992** Excalibur, Chicago, IL
- 1992** Norris Cultural Arts Center, St Charles, IL
- 1992** Bubotto, Elgin, IL
- 1991** Barrington Area Arts Council (BAAC), Barrington, IL
- 1991** St. Luke’s Presbyterian Fine Arts Gallery, Chicago, IL
- 1990** Contemporary Center For the Arts of Arlington, Arlington Heights, IL — “TOTALLY TUBULAR”
- 1989** LeAd, LeBel and Seri Graphics, South Elgin, IL – “EXPERIMENT IN FANTASY”
- 1988** Judson College, Elgin, IL — “EXPERIMENT IN FANTASY”
- 1988** Elmhurst College, Elmhurst, IL — “EXPERIMENT IN FANTASY”
- 1985** Hemmens Auditorium, Elgin, IL

COLLABORATIONS

- 2015** Sheriffs House Pop-up, Woodstock IL – September, “Exploring Relationships” evolved into a moving tribute to “911”, Angela Swan, sculptor
- 1992** Coyle & Company (Shawn Coyle, choreographer) – “Tunnel” Dance performed at Chopin At The Gallery Theater - Around the Coyote (ATC), Chicago, IL; Schaumburg Prairie Center for the Arts, Schaumburg, IL; and Bubotto, Elgin, IL

JURIED AND GROUP EXHIBITS

- 2018** TAC, Highland Park, IL — “Women of Courage”
- 2018** Old Courthouse Art Center, Woodstock, IL — CWCA, “#nakedtruth”
- 2018** Curator- Rex Bruce, LACDA Los Angeles Cntr for Digital Art, Los Angeles, CA. — “ELECTRON SALON”
- 2017** Curator- Caren Helene Rudman, Evanston Art Center, Evanston, IL — “UNDEFINABLE: WOMEN’S HEALTH IN AMERICA”
- 2017** Fulton Street Collective Gallery, Chicago, IL — “UNPRESIDENTED”

JURIED AND GROUP EXHIBITS CONT.

- 2017** Curator- Sergio Gomez, ZhouB Art Center, Chicago, IL — “LAYERED”
2017 Fulton Street Collective Gallery, Chicago, IL — “UNPRESIDENTED”
2017 Elmhurst Art Museum, Elmhurst, IL — CWCA, “TRANSMOGRIFICATIONS”
2017 Old Court House Arts Center, Woodstock IL – “LISTEN”
2016 Juror- Sergio Gomez, Freeport Art Museum, Freeport, IL — 13th Regional Juried Exhibition at FAM
2016 Juried - Old Court House Arts Center, Woodstock IL — “Women’s Works”
2016 Mayslake Peabody Mansion, Oak Brook, IL – CWCA, “CONNECTIONS”
2016 Old Court House Arts Center, Woodstock IL – “E/artgroup anniversary exhibit”
2015 Old Court House Arts Center, Woodstock IL – “END”
2014 Old Court House Arts Center, Woodstock IL – “ELLIPSE”
2013 Old Court House Arts Center, Woodstock IL – “FLY”
2013 Schaumburg Prairie Center For the Arts, Schaumburg, IL – SPACE 900
2012 Starline Gallery, Harvard, IL – “NEW VISION”
2011 Old Court House Arts Center, Woodstock IL – “E/GLUED”
2011 Elmhurst College Barbara A Kieft Accelerator Art Space, Elmhurst, IL
2010 Schaumburg Prairie Center For the Arts, Schaumburg, IL - “E-FIVE”
2009 Juried - Koehnline Museum of Art, DesPlaines, IL — “Down to There: Women and their Relationship to Hair”
2009 Old Court House Arts Center, Woodstock IL – “smaller works”
2008 Juried - Old Courthouse Gallery, Woodstock, IL — “Real People Show”
2008 Dole Gallery, Crystal Lake, IL – “E/GO”
2008 Sage Gallery, Crystal Lake, IL – “E/mersion”
2007 Old Court House Arts Center, Woodstock IL – “Every-Body, A Figurative Exhibition”
2007 Starline Gallery, Harvard, IL – “1-NITE STAND”
2006 Norris Cultural Arts Center, St Charles, IL - “CONNECTIONS”
2006 Art Encounter, Noyes Cultural Arts Center, Evanston, IL – “TRANSFORMATIONS”
2006 Artistic Bits, Dundee, IL – “20/20”
2006 Schaumburg Prairie Center for the Arts, Schaumburg, IL – “NOW AND THEN”
2006 Chicago Artist’s Coalition, Chicago, IL – “CHICAGO ART OPEN”
2005 Juried - Old Courthouse Gallery, Woodstock, IL — “Real People Show”
2005 Chicago Artist’s Coalition, Chicago, IL – “CHICAGO ART OPEN”
2004 Schaumburg Prairie Center for the Arts, Schaumburg, IL – “VISIONS”
1992 Juror- Mary Phelan, Old Courthouse Gallery, Woodstock, IL — “Women’s Works”
1992 Around the Coyote, Chicago, IL
1991 Juror- Joy Horwich, Contemporary Center For the Arts of Arlington, Arlington Heights, IL
1991 Osterle Library Gallery, North Central College
1990 Juried - “Chicago Show” Jurors- Neal Benezra, Kenneth Burkhart, Marva Pitchford Jolly, Paul Sierra and, Lynne Warren, Chicago Cultural Center, Chicago, IL
 Continental Bank (Sponsor of Chicago Show) award – art to be used for Show poster
1990 Jurors - Ralph Arnold and John F. Miller, Norris Gallery, St Charles, IL
1990 Juror- Jane Neville, Contemporary Center For the Arts of Arlington, Arlington Heights, IL
1988 Juried - ARC Gallery, Chicago, IL
1987 Juror- Marianne Philbin, Contemporary Center For the Arts of Arlington, Arlington Heights, IL
1987 The Limelight, Chicago, IL
1986 Juror- Ann Nathon, Contemporary Center For the Arts of Arlington, Arlington Heights, IL
1985 Juror- Ralph Arnold, Contemporary Center For the Arts of Arlington, Arlington Heights, IL
1979 Juried - IDEA Exhibit, Triton College, Chicago, IL
1971 George Williams College



SELECTED AWARDS and COLLECTIONS

1990 Continental Bank (Sponsor of Chicago Show) award – art to be used for Show poster

1988 Nominated for Margaret Hillis Award for the Arts

1971 Elmhurst College Purchase for Permanent Collection

PUBLICATIONS

2017 "Transmogrification" catalog, Photograph and statement, Elmhurst Museum Guild Gallery, Elmhurst, IL, CWCA Press

2016 "Connections" catalog, Photograph and statement, Mayslake Peabody Exhibition Space, Oakbrook, IL, CWCA Press

2015 "Connecting" catalog, Photographs, statement and essay by B David Zarley, Starline Gallery, Harvard, IL, bert leveille Press

2015 "Beyond the Studio" catalog, Photographs, North Shore Senior Center Gallery, Northfield, IL, CWCA Press

2010 "No Place Like Home" catalog, Photograph and statement, Koehline Museum, Oakton College

2009 "Down to There: Women and Their Relationship to Hair" catalog, Photograph and statement, Koehline Museum, Oakton College

2007 "Chicago Art Open 2007" catalog, Photograph, Chicago Artists Coalition

EDUCATION

1971 Elmhurst College, BA - Art

2005 Northern Illinois University, Graduate Studies

MEMBERSHIPS

Board member of the Chicago Women's Caucus for Art (CWCA), member of Chicago Artists Coalition, E-Artgroup, Northwest Area Cultural Council, Past Commissioner on the Elgin Cultural Commission, Past Board Member of Contemporary Arts of Arlington, and Past Board Member of Bubotto



CONTACT INFO

BERT LEVEILLE — (708) 309-3333; email bert@leveille.net,

More about BERT LEVEILLE:

website: <http://www.bertleveille.com>

facebook: <https://www.facebook.com/bert-leveille-visual-artist-56967468259/>

instagram: <https://www.instagram.com/bertleveilleartist/>

blog: <http://bertleveille.com/wordpress/>

linked in: www.linkedin.com/in/bertleveilleartist

other exhibits and links to videos: <http://www.bertleveille.com/blexhib.html>

video of exhibit at Starline, Harvard, IL: <https://vimeo.com/231420404>

Hi-Res images can be found in DROPBOX: [DropBox bert leveille images: Streaming Reflections](#)

